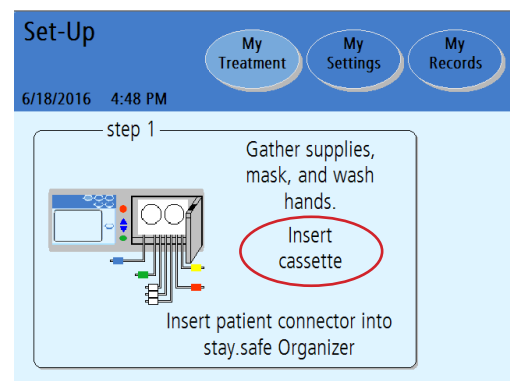


How to Insert the Liberty[®] Cyclor Cassette


Note: This document is not intended to replace your doctor's or peritoneal dialysis nurse's advice or training. Please refer to your Liberty cyclor's user guide for more information on how to safely and effectively use your Liberty cyclor.


Step 1: Prepare the Cassette

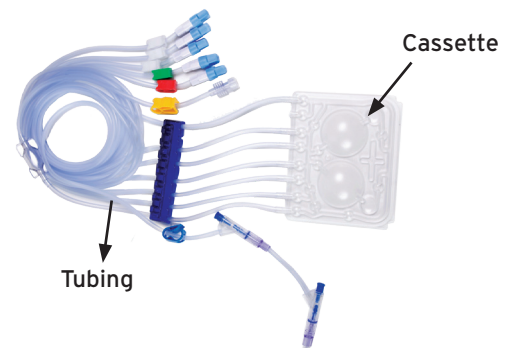
When prompted on the cyclor screen to "insert cassette" ...



- Remove the cyclor set from its packaging.
- Inspect the cyclor set to make sure it's free from kinks or damage. Look for scratches, loose tubing, or small holes in the cassette film.

 **Caution:** Use caution when touching the cassette film to prevent damage.

 **Warning:** DO NOT USE the set if it is damaged. Put the damaged set aside and immediately call Customer Service at 800-323-5188 to arrange a pick-up to return the damaged set.



Sample cyclor set with cassette and tubing

Step 2: Open the Cassette Door

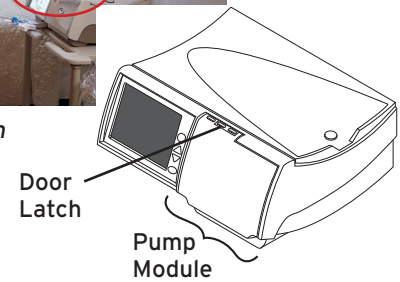
Firmly push the door latch to open the cassette door.

⊗ **Caution:** Avoid touching the sensors inside the cassette door, as this could cause damage to the pump module.

⊗ **Caution:** The cassette door is pressurized. Do not attempt to open the cassette door until your machine instructs you to do so.



Pushing the door latch

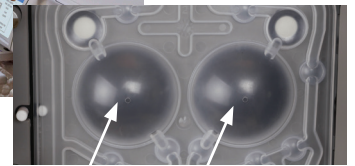


Step 3: Insert the Cassette

Hold the cassette with the plastic domes facing outward (towards you).

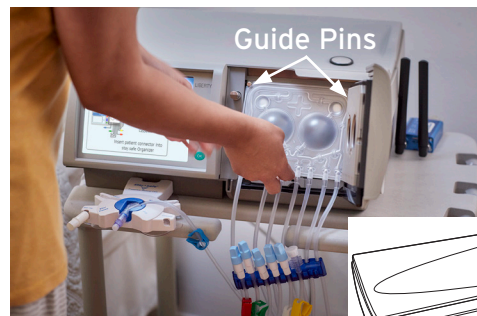


Holding the cassette

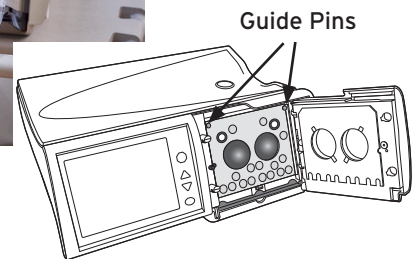


Cassette Domes

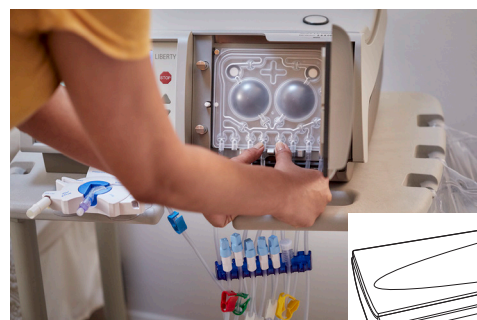
Slide the cassette up and under the metal guide pins at the top of both sides of the pump module.



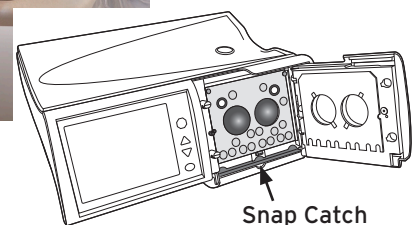
Inserting the cassette



Then, snap the cassette in place using the catch at the bottom of the pump module.



Snapping the cassette into place



Snap Catch

If your cyclor has an alignment bar...

- Make sure the cassette is resting up and under both guide pins.
- Make sure the bottom of the cassette is snapped in place and resting on the catch.
- The tubing should hang down in front of the cyclor over the alignment bar.



Cyclor with alignment bar

If your cyclor DOESN'T have an alignment bar...

- Make sure the cassette is resting under the guide pins at the top of the pump module and within the snap catch at the bottom of the pump module.
- The tubing should hang freely down in front of the cyclor.



Cyclor without alignment bar

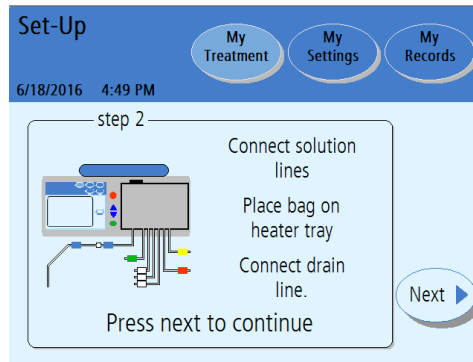
Step 4: Close the Cassette Door

Close the door over the cassette. Ensure the cassette door clicks into place to lock it.

- ⊗ **Caution:** Do NOT force the door closed. If you're having trouble closing the door, open the cassette door and make sure the cassette has been inserted correctly (see Step 3).

Your cyclor will pressurize the cassette door and then display the next step of the setup process.

- ⚠ **Warning:** A damaged cassette can cause peritoneal dialysis (PD) solution to leak into the cyclor and is a potential risk for contamination. Notify your PD nurse if you find a fluid leak.



Indications for Use: The Liberty, Liberty Select, and Liberty PDx cyclors are indicated for acute and chronic peritoneal dialysis.

Caution: Federal (US) law restricts these devices to sale by or on the order of a physician.

Note: Read the Instructions for Use for safe and proper use of these devices. For a complete description of hazards, contraindications, side effects, and precautions, see full package labeling at www.fmcna.com.



**FRESENIUS
MEDICAL CARE**

Liberty[®]
united with stay·safe[®]



**FRESENIUS
MEDICAL CARE**